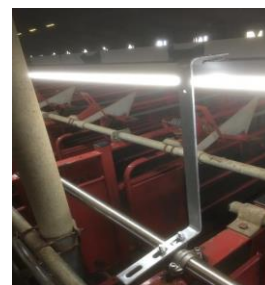
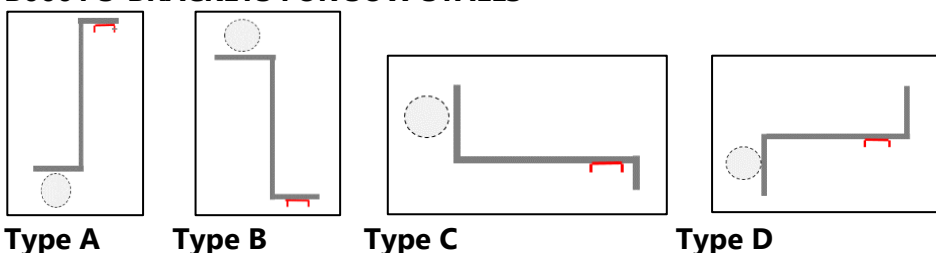


SOW-LIGHT™ MOUNTING BRACKET

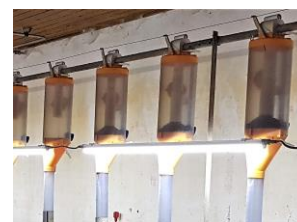
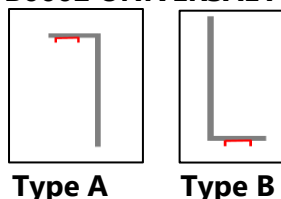
Item No.	Product	Dimension	Description
B0001	S – BRACKET	25x80x350x150 mm	4 mm. hot-dip galvanized
B000338	U – CLAMP	38 mm	U-Clamp for mounting of B0001
B000351	U – CLAMP	51 mm	U-Clamp for mounting of B0001
B000364	U – CLAMP	64 mm	U-Clamp for mounting of B0001
B0002	Angle brackets	20 x 55 x 85 mm	2 mm Stainless Steel
W0009	Screw – self-drilling	4,2 x 19 mm	Stainless Steel A2



B0001 S-BRACKETS FOR SOW STALLS



B0002 UNIVERSAL ANGLE BRACKET



Fittings for mounting of RNS Plug´N Play™ Fixtures on Brackets

Item No.	Product	Dim.	Suitable for Luminaire	Material	Color
D0003	Screw fittings	20 x 48 mm	MODULAR-LIGHT / DANISH FARMLIGHT	Aluminum	Aluminum grey
D0006	Click fittings	16 x 57 mm	MODULAR-LIGHT	PVC	Grey
D0007	Click fittings	16 x 49 mm	BASIC FARM-LIGHT	PVC	Grey
W0010	Screw – self-drilling	2,9 x 19 mm		Stainless A2	
W0009	Screw – self-drilling	4,2 x 19 mm		Stainless A2	
W0012	Bolt	5 x 16 mm		Stainless A2	
W0013	Nut	M5		Stainless A2	
W0017	Bolt	6 x 25 mm		Stainless A2	
W0018	Nut	M6		Stainless A2	



Choose between **RNS FARM-LIGHT** or **RNS MODULAR-LIGHT** LED Luminaires (In USA and Canada **DANISH FARM-LIGHT**), see product sheet.

In addition, the **SOW-LIGHT™** concept consists of 40 cm intermediate cables (F040P) between each luminaire.

In each row a further 1 piece. starter cable 150 or 300 cm. (F150POE or F300P) and end plug (D0001)

See data sheet: **RNS SYSTEM CABLES - CABLES & ACCESSORIES**

We refer to our **sales, warranty and delivery terms** on our website.